

Korea; New Hub for International Student Mobility

Mr. Kyoung Oh Lee

Manager, Office of International Affairs

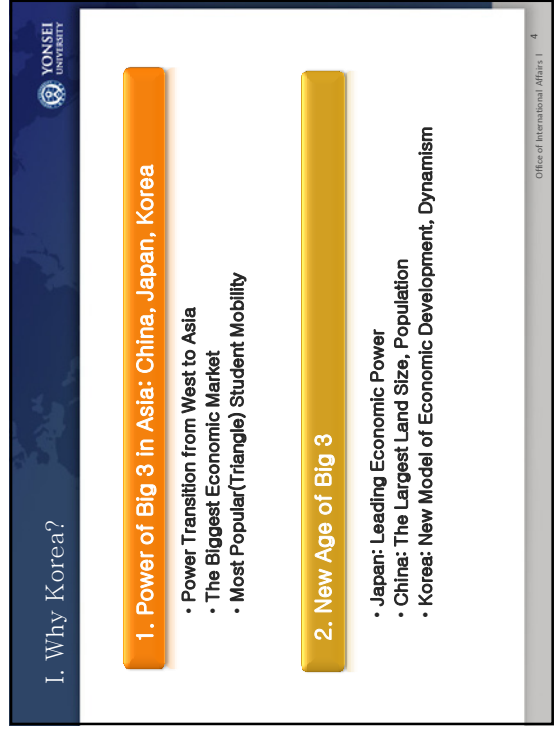
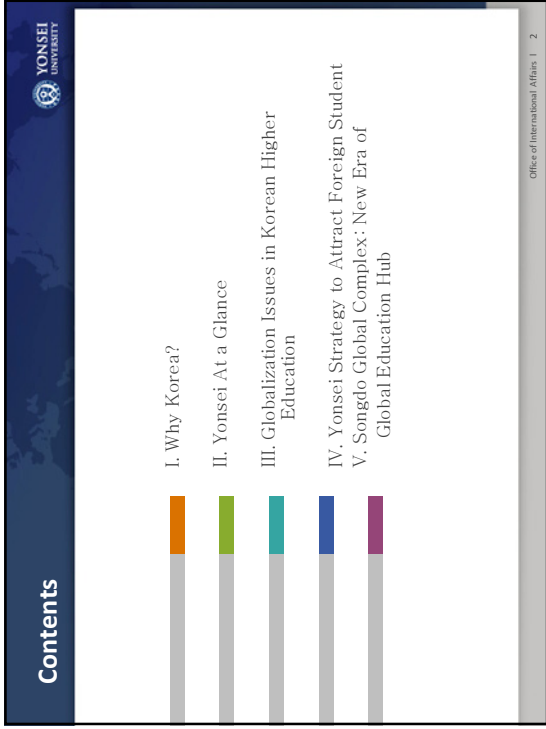
Yonsei University

As one of the most rapidly developing countries in the world, Korea has become a model for educational expansion, gender equality, industrial development, and many other key issues facing the nations of Asia and the world. As a leader of IT Revolution, Korea is the most wired countries in the world.

The dynamism in Asia springs from factors such as an appreciation of education, dedication to hard work, pride in self reliance, and belief in progress and the future. Korea is no exception. To a foreigner's eyes, Korea may seem similar to China or Japan at first. But one quickly realizes that Korea has a unique culture that offers an intriguing mixture of modernization and tradition. In this sense, Korea provides a particularly advantageous position from which to study the changing culture, economics, and politics of all the nations of the Asian region.

This presentation will address the major factors that contribute to a student's decision to Korea as a study abroad destination. Especially, the survey will identify the most important elements they take into consideration when selecting a study abroad destination, as well as what they expect to gain from the study abroad opportunity.

Especially, Yonsei has succeeded in attracting a large number of students from different countries who join the Tailor-made Program or Short Term Exchange Program. This presentation will also address the "Songdo Global Complex Project" which create the Asian Hub of Research and Education and serve as the major destination for western students in Asia for East Asian studies and technology research



# I. Why Korea?

## 1. Geographical Advantage

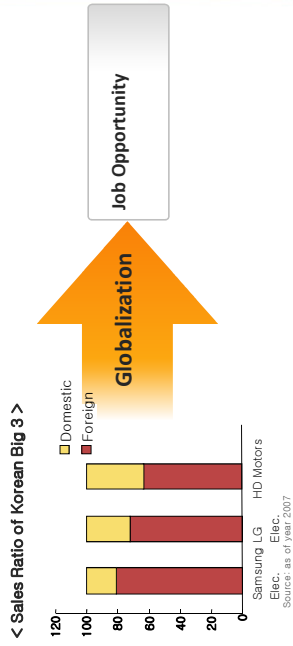
## 2. Dynamic Society

## 3. Korean Wave



# I. Why Korea?

## 4. Globalization of Company



# I. Why Korea?

## Reference

### Box C3.1. Long term growth in the number of students enrolled outside their country of citizenship

Growth in internationalisation of tertiary education (1975-2005)

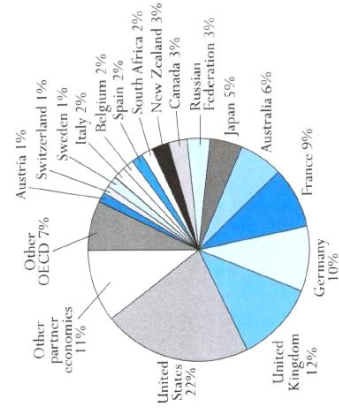


Source: OECD and UNESCO Institute for Statistics.



# I. Why Korea?

## Ref.: Distribution Chart of Transnational Student Mobility(2005)



YONSEI UNIVERSITY  
Office of International Affairs | 9

## II. Yonsei At a Glance

YONSEI UNIVERSITY  
Office of International Affairs | 1

## History & Motto



**Founded in 1885**

- 1885. 4 Kwanghyewon (Royal Hospital)
- 1919. 3 Chosun Christian College
- 1957. 1 Yonsei University
- (Merger of Yonhui College with Severance University Medical School)
- 2005. 5 120th Anniversary



**Motto: Truth & Freedom**

"The truth shall make you free."  
(John 8:31-32)

YONSEI UNIVERSITY  
Office of International Affairs | 11

## Key Statistics

<b>Faculty</b>	<b>Full-time</b>	<b>1,739</b>
	<b>Part-time</b>	<b>2,342</b>
	<b>Staff</b>	<b>6,304</b>
<b>Affiliated Research Institutes</b>		<b>130</b>
<b>Number of Courses Offered</b>		<b>6,051</b>
<b>Budget</b>		<b>340 Million GBP</b>
<b>SCI Ranking (As of 2005)</b>		<b>104 (2,025 theses)</b>

Yonsei is the best private and the most globalized university in Korea  
Top 1.2~1.5% of whole high school graduates can get into Yonsei

YONSEI UNIVERSITY  
Office of International Affairs | 12

## Globalization

**Partner Institutions**

<b>Australia</b>	University of Sydney
<b>Canada</b>	McGill University
<b>China</b>	Fudan University
	Tsinghua University
<b>Denmark</b>	University of Copenhagen
<b>France</b>	Sciences-Po
<b>Germany</b>	University of Munich
<b>Italy</b>	Boccconi University
<b>Japan</b>	Kyoto University
	University of Tokyo
	Keio University
<b>Netherlands</b>	Erasmus University, Rotterdam
<b>New Zealand</b>	University of Auckland
<b>Singapore</b>	National University of Singapore
<b>USA</b>	University of California, Berkeley
	University of Pennsylvania
<b>Thailand</b>	Chulalongkorn University
<b>UK</b>	University of Oxford

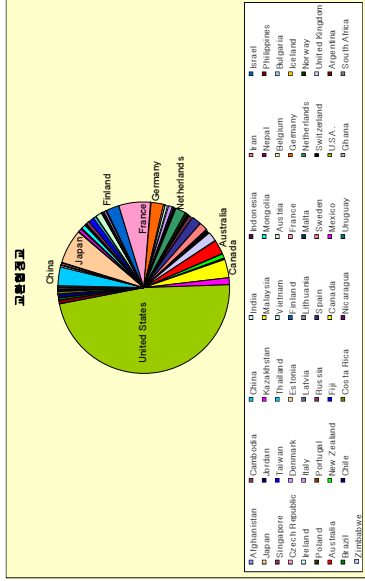
**Partner Universities**  
**578 Institutions**  
**in 59 Countries as of November 2008**




## Student Exchange

	Incoming	Outgoing
Spring	285	526
Summer	663	61
Fall	367	501
<b>Total</b>	<b>1315</b>	<b>1088</b>

Total 59 Countries 578 Institution



## III. Globalization Issues in Korean Higher Education

1. Outreach/Study Abroad
  - WEST Program
  - Global Internship/Working Holiday
2. Courses in English, Foreign Faculty
  - World Class University Project

YONSEI UNIVERSITY  
Office of International Affairs | 17

### III. Globalization Issues in Korean Higher Education

- 3. Global Standard on Campus**
  - Academic Regulation
  - Harmony with Local & Foreign Culture
- 4. Strategy to Recruit More Foreign Students**
  - NAFSA, EAIE, APAIE, QS-APPLE
  - Education Fair Supported by Government

YONSEI UNIVERSITY  
Office of International Affairs | 18

### IV. Yonsei Strategy to Attract Foreign Students

YONSEI UNIVERSITY  
Office of International Affairs | 19

### Yonsei Know-how for Global Excellence

- 1. Long History of Globalization Since 1960s**
- 2. Harmony of Hardware & Software**  
Ratio of Courses in English 25%, High Quality On-campus Housing
- 3. Program for Multi-cultural Understanding**  
Global Lounge, Language Exchange, Global Day
- 4. Various Education Program for Int'l Students**  
The Best Korean Language Program  
International Summer School, Taylor Made Program

YONSEI UNIVERSITY  
Office of International Affairs | 1

### Global Lounge

- ▶ A Multi-functional Compound
- ▶ Wireless Internet Access, Study and Seminar Rooms
- ▶ 8 Satellite TV Channels with Wireless Headsets
- ▶ On-spot Help Center
  - Hub of Cultural Exchange
  - Home-Stay, Language Exchange
  - Travel, Transportation, etc.




## 2nd International House



- **Size**
  - 11 stories
- **Capacity: 659**
  - Family room: 20 (70 persons)
  - Single room: 191 (191 persons)
  - Twin room: 198 (398 persons)
- **Construction period: 2007 – 2009**

## Tailor-made Programs

Country	Institution	Period	Student No.	Year Of program Start	Reference
	Kelo University	2/9 – 2/21	17	2007	
Japan	Kwansei Gakuin University	3/10 – 3/15	5	2007	
	Hosei University	9/18 – 1/30, 2009	8	2000	
	St. Olaf College	1/2 – 1/25	28	1996	
USA	Indiana University	5/14 – 5/24	20	2008	
	<b>CIIEE /FDS (Scheduled)</b>	<b>6/10 – 6/18</b>	<b>12</b>	<b>2009</b>	
	<b>Washington University in St. Louis (Scheduled)</b>	<b>4 Months</b>	<b>12</b>	<b>2009</b>	
China	University of Hong Kong	7/12 – 7/20	35	2008	
	<b>Total</b>		<b>127</b>		

## V. Songdo Global Academic Complex; New Era of Global Education Hub

## A bird's eye view of Songdo Global Academic Complex



## An outline of Songdo Global Academic Complex



### Location

- Incheon Free Economic Zone Songdo Area (30km west from Seoul)

### Land Area

- 616,017m<sup>2</sup> (152 acre, 6,630,689ft<sup>2</sup>)

### Features

- Global Campus, Joint University Campus, R&D Campus

### Numbers Involved

- Students 4,000 / Researchers 500
- Professors & Staff 500

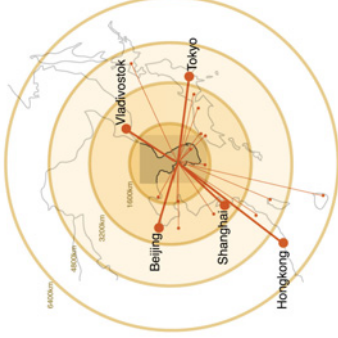
25

## Geographical Advantages of Incheon



### Gateway to China Japan & Russia

Incheon to	Beijing	Shanghai	Tokyo	Vladivostok	Hong Kong
	1.5 hrs	1.5 hrs	1.5 hrs	2 hrs	3 hrs



- Incheon is within a 3.5 hour flight to 51 cities, each with a population of over one million
- Incheon aims to be hub city of east Asia

26

## Chief features of Songdo Global Academic Complex



### Global Campus

- Site for Yonsei's global campus
- Specialized campus for global education & high-tech research
- Residential college system

### Joint University Campus

- Site for branch of leading foreign univ. and educational institute
- Programs can be independently managed, or jointly managed with Yonsei.

27

Thank you  
Arigato Kozaimas



Office of International Affairs | 28