

<The Role of the International Office:

In building better research partnership and student exchanges>

From Centralized Office to Decentralized System: Creating New Administrative Structure at Keio

Fumi Yabe
Manager, International Center
Keio University

Keio is planning to merge administrative offices of the Academic Affairs Center, the Student Affairs Center, and the International Center to create a new administrative unit.

Historically, the International Center (established in 1964) has been the only Keio's centralized office, which has initiated and managed university-level international activities. However, profound changes in the higher education landscape both at home and abroad, have resulted in Keio reevaluating its approach to international activities. As a result, Organization for Global Initiatives (OGI) was established in January 2005 to strengthen Keio's international dimension and to develop strategic initiatives that enable the university to take a proactive role in the creation of international alliances, and the enhancement of Keio's own global activities. The role of the International Center has shifted more to planning and implementation of various international programs in collaboration with OGI.

However, because of its long history, perception towards the International Center as the centralized international office but somewhat isolated from the mainstream of university administrative system remained at Keio. This perception has created a mind set that issues related to international, such as services and programs for international students and study abroad are the responsibility of the International Center.

Since the establishment of OGI, Keio's international activities have expanded dramatically. Some of the indicators such as number of exchange agreements, international students, and international conferences hosted by Keio, have shown large increase. To meet the emerging challenges and future challenges resulting from further internationalization in the coming years, identifying key functions of "International Office" and introducing drastic structural reform in administrative offices is now needed.



Beyond "Island Approach" : Creating New Administrative Structure of "International Office" Keio University

February, 2009

Fumi Yabe
 Manager, International Center
 Keio University

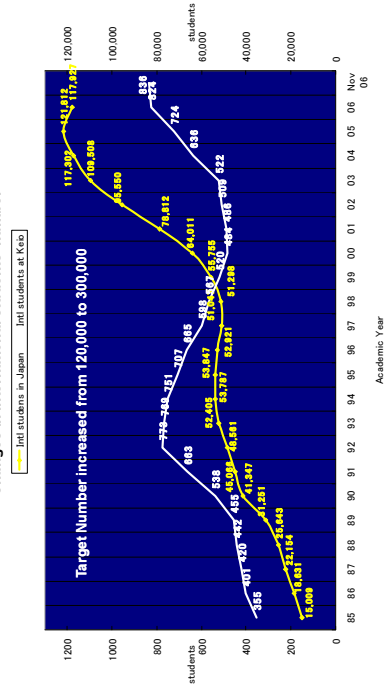
Tradition of Centralized International Office

- 1964 International Center
- 1990 Center for Japanese Studies
- 2005 Organization for Global Initiative (OGI) & OGI Office

2

Increasing International Students

Changes in international students' number



3

Keio's International Collaboration: 934 Students from all over the world

International students by Source Country (As of May 1, 2008)

Country (Area)	Number of Intl students	Percentage
China	276	29.6%
Korea	260	27.8%
Taiwan	51	5.5%
U.S.A.	49	5.2%
France	38	4.1%
Thailand	29	3.1%
Indonesia	28	3.0%
Germany	18	1.9%

International students by affiliation	
Undergraduate students	314
Graduate students	419
Japanese Language and other short term students	201
Total	934

Pursuit of Quality, and not Quantity, of International Students

4

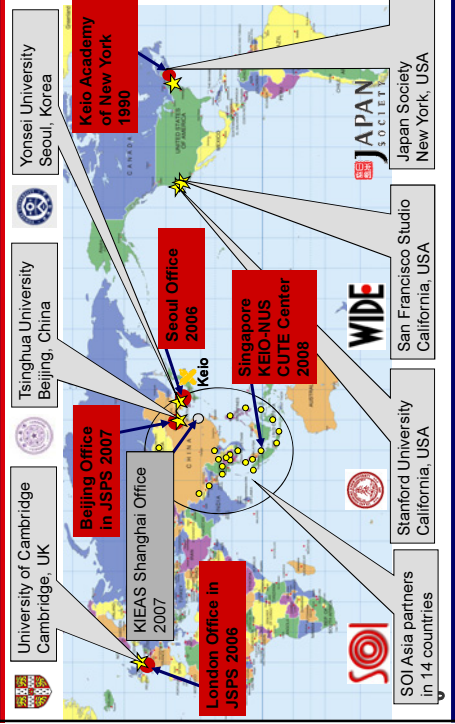
International Collaboration: 237 agreements with all parts of the world

Region	May 2001	January 2005	January 2006	January 2007	August 2008	October 2008
Asia	16	27 ⁺¹¹	30 ⁺³	50 ⁺²⁰	71 ⁺²¹	71
Middle East	1	1 ⁺⁰	2 ⁺¹	2 ⁺¹	3 ⁺¹	3
Africa	0	0 ⁺⁰	0 ⁺⁰	0 ⁺⁰	1 ⁺¹	1
Oceania	5	4 ⁻¹	6 ⁺²	7 ⁺¹	7	7
North America	31	38 ⁺⁷	45 ⁺⁷	47 ⁺²	57 ⁺¹⁰	59 ⁺²
Latin America	2	3 ⁺¹	3 ⁺⁰	4 ⁺¹	4	4
Europe	31	58 ⁺²⁷	67 ⁺⁹	73 ⁺⁶	86 ⁺¹³	87 ⁺¹
Other	2	3 ⁺¹	3 ⁺⁰	4 ⁺¹	5 ⁺¹	5
Total	88	134 ⁺⁴⁶	156 ⁺²²	187 ⁺³¹	234 ⁺⁴⁷	237 ⁺³

+149 partners since 2001

5

13 Offices/Satellites Abroad



Participation to Global Alliances

- **APRU**
(Association of 42 Pacific Rim Universities)
- **T.I.M.E.**
(Network of 51 leading engineering schools, faculties and technical universities in Europe)
- **CEMS**
(Network of 27 world-class academic institutions, 23 full members mostly in Europe and 4 associate members in management and economics)

7

University-wide International Activities Organized by Keio

150th Anniversary Event
Vietnam-Japan Friendship Initiative;
Summer Workshop 2006
(Hanoi & Ho Chi Minh City, Vietnam)

150th Anniversary Lecture
[Lecture Series 1]
President Anzai delivers speech
at Japan Society (New York, U.S.A.)

150th Anniversary International Symposium
[Lecture Series 2] (London, UK)
"Frontiers of Neuroscience"
April 2007; Keio initiative jointly hosted by Keio University, University College London (UCL) and JSPS.

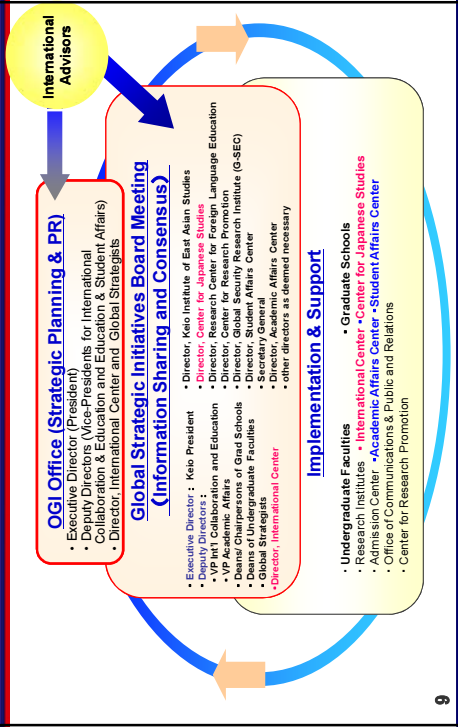
150th Anniversary International Symposium
[Lecture Series 3] (Beijing, P.R. China)
Future Direction of the Chinese Economy: comparison of Keio and China
November 2007; Keio initiative, jointly hosted by Keio University, Renmin University of China and JSPS.

KEIO/ISO/UK-JAPAN 2008 British Nobel Laureate Lecture Series (Mitsui Campus, Tokyo)
February-July 2008

(Photo: Aya Akemura)

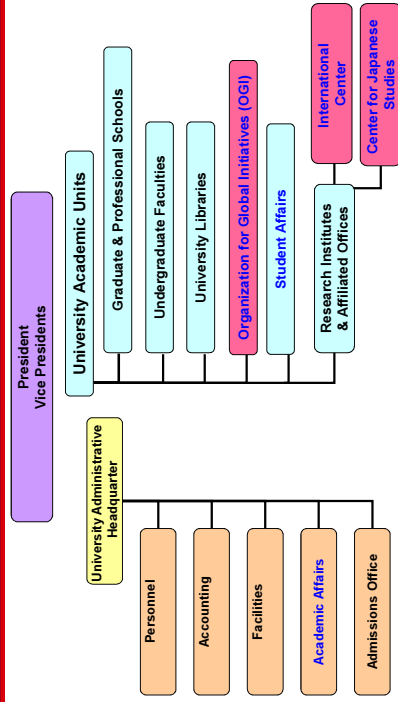
8

Global Initiatives: OGI Structure & Governance



9

Organization Chart (Summary: Present)



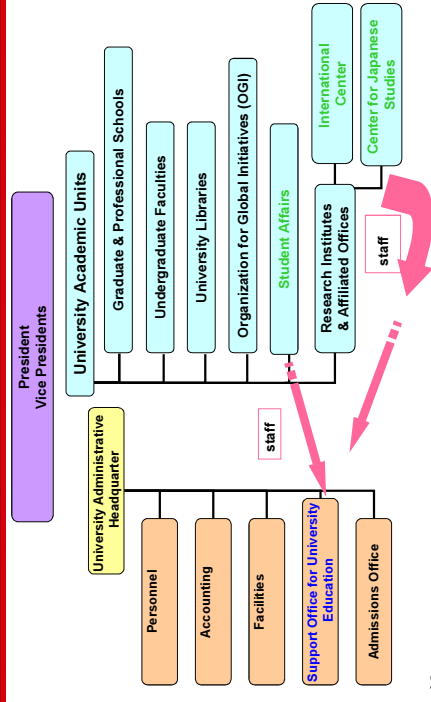
10

Functions of the International Center (1) <For Students>

- Coordinating student exchange program (Incoming & Outgoing)
- Providing academic programs in English
 - Keio International Programs (Japanese Studies Courses/International Studies Courses)
- Coordinating scholarships and awards for international students and for study abroad
- Summer / Spring Short Study Abroad Programs
- Maintaining international student database including immigration status
- Assisting application for Certificate of Eligibility and various immigration procedures
- Administrative office for the Center for Japanese Studies
- Housing office function (about 450 rooms, +150 rooms in April 2009)

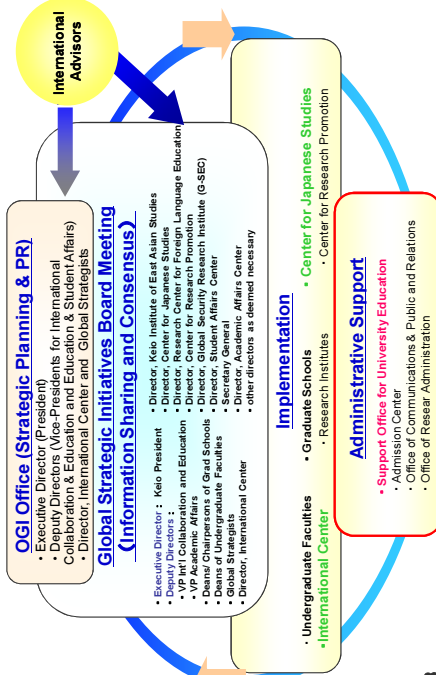
11

Organization Chart (Summary: After April 2009)



12

Global Initiatives: OGI Structure & Governance



13

Functions of the International Center <For Scholars>

- coordinating exchange programs for researchers
- Assisting application for Certificate of Eligibility and various immigration procedures
- Coordinating international visitors, lectures, and conferences
- Housing for international scholars

14

Benefits for Mainstreaming “International Office” functions

- Increasing contacts between international students and Japanese students
- More attention to international students and study abroad opportunities for Japanese students
- More cross-cultural experience for administrative staff members
- Ideally, each university administrative office will become able to work with international students and scholars
⇒ will be able to accommodate larger number of international students and scholars
- Opportunities for internationalization within the university

15

Challenges for Mainstreaming “International Office”

1. Overcoming psychological resistance against change and something unfamiliar to them
2. Staff development
3. Creating large office space
⇒ New building will be built by 2011



16

What are the key roles of "International Office" ?



- Promoting international activities and collaboration with overseas universities within the university
- Promoting more horizontal, vertical and diagonal collaboration with faculty and administrative staff across campuses
- Providing support to international initiatives of academic units
- Providing a point of contact for international partners
- Accumulating information on international activities as future resources

17



KEIO 150
Design the Future

www.keio.ac.jp
<http://keio150.jp>

Shimoda Student Village



- Opened April 2006
- Houses 150 international and 200 local students
- Fully equipped, air-conditioned private rooms for international students

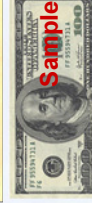


19

Keio University Fact Sheet



- Founded in 1858 by *Yukichi FUKUZAWA*
- Started modern higher education in Japan
- 6 campuses in Japan, 1 in New York
- 10 faculties, 14 graduate schools
- President *Yuichiro ANZAI*
- 1 university hospital (1,000 beds)
- 29,000 undergrad., 4,500 grad. students
- 2,000+ teaching and 2,700 admin staff
- Annual operating budget of US\$1.2 billion
- Endowment of US\$3.8 billion



20

Educational System

10 Undergraduate Faculties

- Letters
- Economics
- Law
- Business & Commerce
- School of Medicine
- Science & Technology
- Policy Management
- Environment & Information Studies
- Nursing & Medical Care
- Pharmacy

14 Graduate Schools

- Letters
- Economics
- Law
- Human Relations
- Business & Commerce
- Medicine
- Science & Technology
- Business Administration (KBS)
- Media & Governance
- Law School
- Health Management
- System Design & Management
- Media Design
- Pharmaceutical Sciences

21

6 Campuses in Tokyo Area

The map shows the following campuses and their locations:

- Tsuruoka Town Campus (TTCK) Shin-Kawasaki Town Campus**: Located in the western part of the map.
- Shonan Fujisawa Campus (SFC) Policy, Media, Health Care, Sport...**: Located in the southern part of the map.
- Yagami Campus Science and Technology**: Located in the central part of the map.
- Hiyoshi Campus Liberal Arts**: Located in the central part of the map.
- Shiba Kyoritsu Campus Pharmacy (Apr. 2008)**: Located in the central part of the map.
- Mita Campus Humanities and Social Sciences**: Located in the eastern part of the map.
- Shinanomachi Campus Medical Science and Medical care**: Located in the northern part of the map.

22

International Education

Enhanced quality and services in Japanese language & cultural studies programs

- Since 1960s, most highly regarded program run by a Japanese university
- New curricula meet diverse needs of students

Ongoing expansion of international programs offered (degree, non-degree, double degree)

- 104 undergraduate and 185 graduate courses delivered in English

23

International Educational Programs

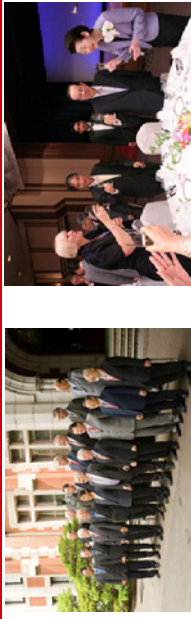
- International Programs delivered entirely in English (Undergraduate, Master, Doctor)
 - 1996: Joint Japan/World Bank Graduate Scholarship Program in Taxation Policy and Management (Masters)
 - 2003: International Graduate Programs for Advanced Science & Technology (5 areas of study; Masters and Ph.D.)
 - 2006: International Advanced Degrees Program in Media & Governance (3 areas of study; Masters)
 - 2008: Professional Career Program (PCP) in Economics (5 areas of study)
 - 2008: Graduate School of Media Design
 - 2008: Graduate School of System Design and Management
- Double Degree Programs (Master)
 - 2005: Fudan University, China (Graduate School of Media & Governance)
 - 2005: Intergroupe des Ecoles Centrale, France (Graduate School of Science & Technology)
 - 2005: Yonsei University, Korea (Graduate School of Media & Governance)
 - 2006: "Indonesia Linkage Program" (Graduate School of Media & Governance)
 - 2006: "Indonesia Linkage Program" (Graduate School of Media & Governance)
 - 2008: ESSEC Business School (Keio Business School)
- International Center (For short-time visit students and others)
 - 24*International studies courses" and "Japanese studies courses" in English (Total 50 classes)

150th Anniversary Commemorative Project

- “Design the Future,” “Independence” & “Collaboration”
- 90 billion yen over 10 years (2005-2015)
- **“Design the Future” Fund promotes:**
 - International experience (study abroad, internships)
 - International exchange (support for incoming students)
 - > 5 full scholarships/year awarded to non-Japanese MA students
 - > 400+ residential rooms made available for int'l students
 - International lectures in English (top academics from abroad)
 - Unified system fostering *independence* and *collaboration* at affiliated schools (elementary → high school)
 - Cultivating students who will design the future, have the capacity to think independently and collaborate with others

25

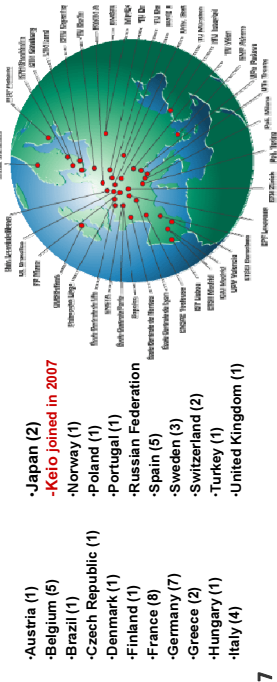
Global Alliances (1) APRU (Association of 42 Pacific Rim Universities)



<p>Keio University Summer School at University of Washington</p> <p>Since 2006, Keio has made this program open to all APRU member universities</p> <p>When: End of August or mid-September</p> <p>Participants: 30 students</p>	<p>8th Doctoral Students Conference (DSC)</p> <p>Keio hosted the DSC 2007 <FIRST HOST IN JAPAN></p> <p>When: 30 July-3 August 2007</p> <p>Participants: 98 students</p>	<p>12th Annual Presidents Meeting (APM)</p> <p>Keio hosted the APM 2008 <FIRST HOST IN JAPAN></p> <p>When: 26-28 June 2008</p> <p>Participants: 22 presidents</p>
--	---	---

Global Alliances (2) T.I.M.E.

T.I.M.E. is a network of 51 leading engineering schools, faculties and technical universities which offers, through a system of voluntary bilateral agreements between its members, high-level educational programs for engineers and future industrial executives.



27

Global Alliances (3) CEMS

CEMS is a network of 27 world-class academic institutions (23 full members and 4 associate members) and more than 50 corporate partners offering international postgraduate students a unique blend of high quality education and professional experience.

- CEMS member countries:
(each country can be represented by only one institution)
- Australia
 - Austria
 - Belgium
 - Brazil
 - Czech Republic
 - Denmark
 - Finland
 - France
 - Germany
 - Hungary
 - Ireland
 - Italy
 - Mexico
 - Norway
 - Poland
 - Portugal
 - Russia
 - Singapore
 - Spain
 - Sweden
 - Switzerland
 - The Netherlands
 - United Kingdom
 - Canada
 - China (Beijing)
 - China (Hong Kong)
 - Japan (Keio as an associate member from 2008)

28

Enriching Keio Students' Study Abroad Experience



	Outgoing students (exchange/ scholarship / Keio paying)	Participants (Short-Term Study Abroad Program)	DD Program (Faculty of Science and Technology)	2006 Total
Ireland	1	-	-	(1)
U.S.A.	62	(116)	-	(178)
Argentina	1	-	-	(1)
Italy	3	-	-	(3)
India	1	-	-	(1)
Indonesia	1	(5)	-	(6)
UK	18	(71)	-	(89)
Egypt	1	-	-	(1)
Australia	7	-	-	(7)
Austria	2	(1)	-	(3)
Netherlands	3	(1)	-	(4)
Canada	10	-	-	(10)
Singapore	4	-	-	(4)
Syria	-	(20)	-	(20)
Total		191	(412)	(607)

Organization of the International Center



<Faculty Members>

- **Director**
- **Deputy Directors**
- **Academic Advisors representing academic faculties**
- **Approximately 30 administrative staff members on 6 campuses**