

Introduction about Chuo Kaihatsu Corporation

①

What is a construction consultant?

As a neutral and independent group of professionals providing advanced technology, we work as a partner to support the national and local governments, public enterprises, and private businesses in the development of social infrastructure.



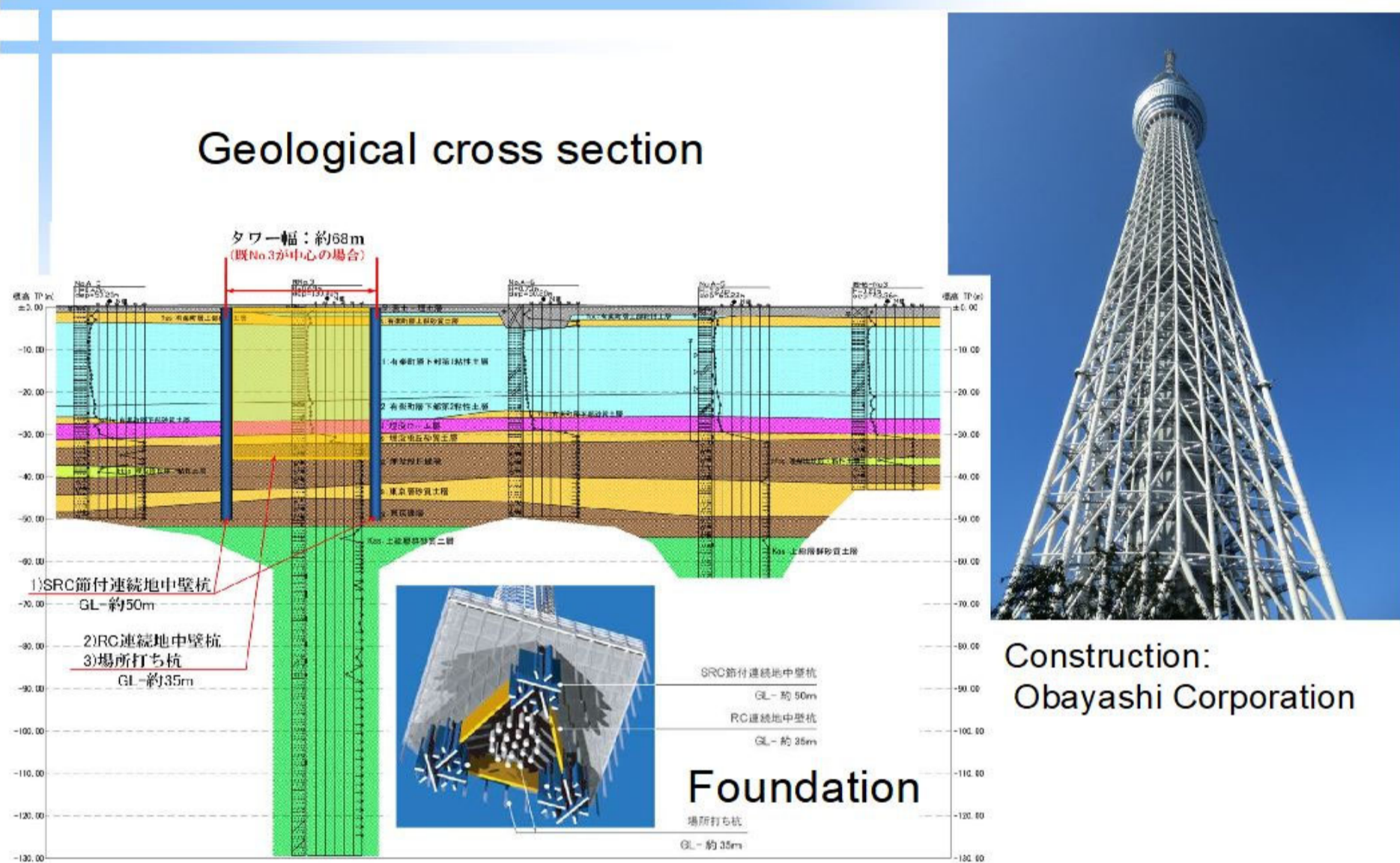
④

Debris Flows Kii Peninsula 2012



⑦

A case of geological investigation: Tokyo Skytree Tower



⑩

Corporation Social Responsibility (CSR)

Disaster survey

- Geotechnical Information Navigation (Geo-Navi): boring survey data released for free
- Disaster damage survey: earthquake, flood, etc.



⑬

Our primary services

International Consulting

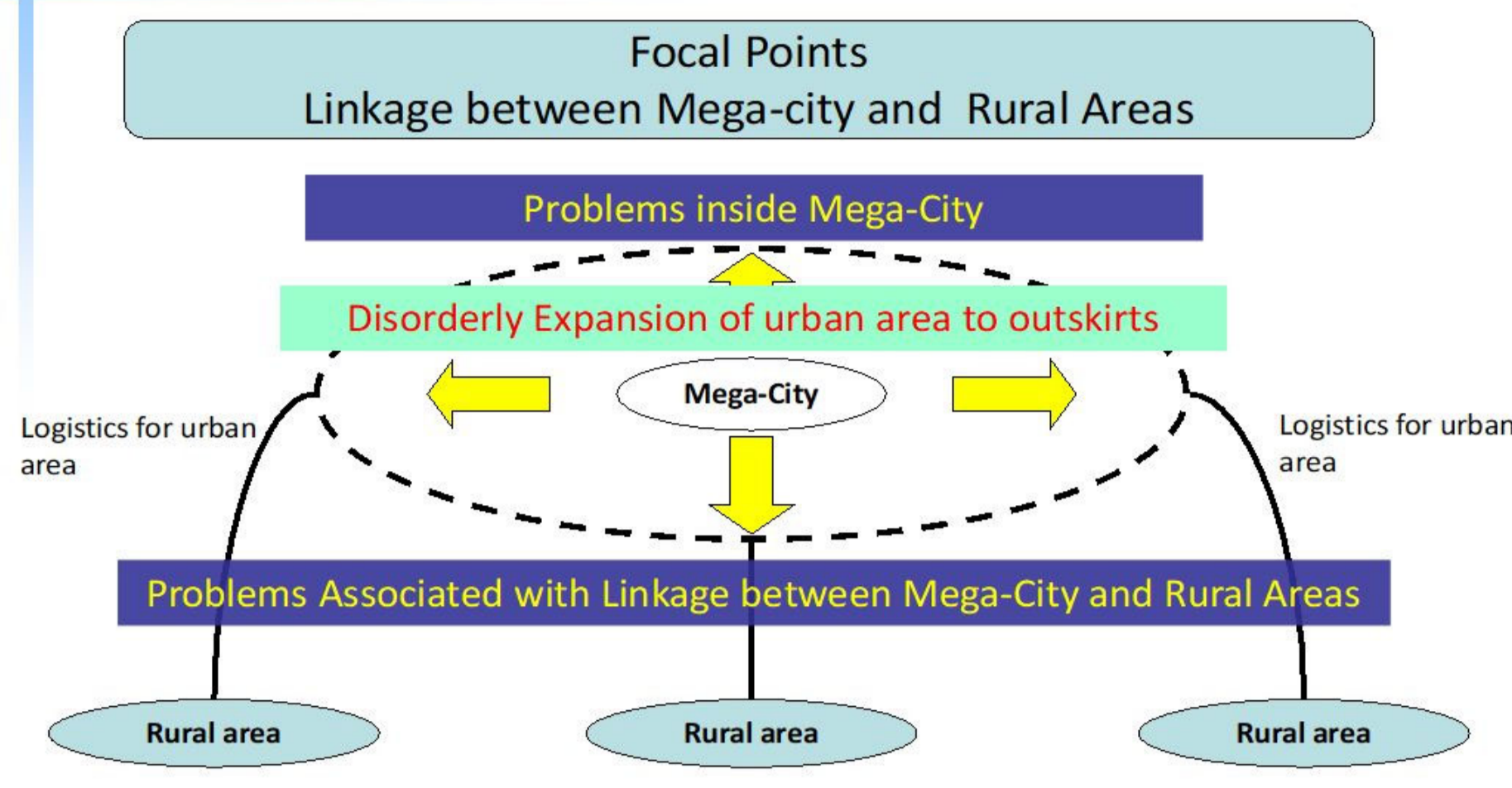
We are planning to establish bases in Asia

- Support for regional promotion and development of groundwater



②

Geotechnical Infrastructure Asset Management



⑤

Deep-seated landslides Kii Peninsula 2012



⑧

Our primary services

Geological survey

- Geological survey, soil and groundwater investigation, and laboratory testing
- Resource exploration, environmental improvement, and maintenance of facilities for disaster prevention
- Soil and groundwater pollution investigation
- Geophysical survey, stratigraphic logging, vibration and noise survey
- Active fault survey, subsurface structural analysis (microtremor array survey)
- Disaster survey



Marine geological survey



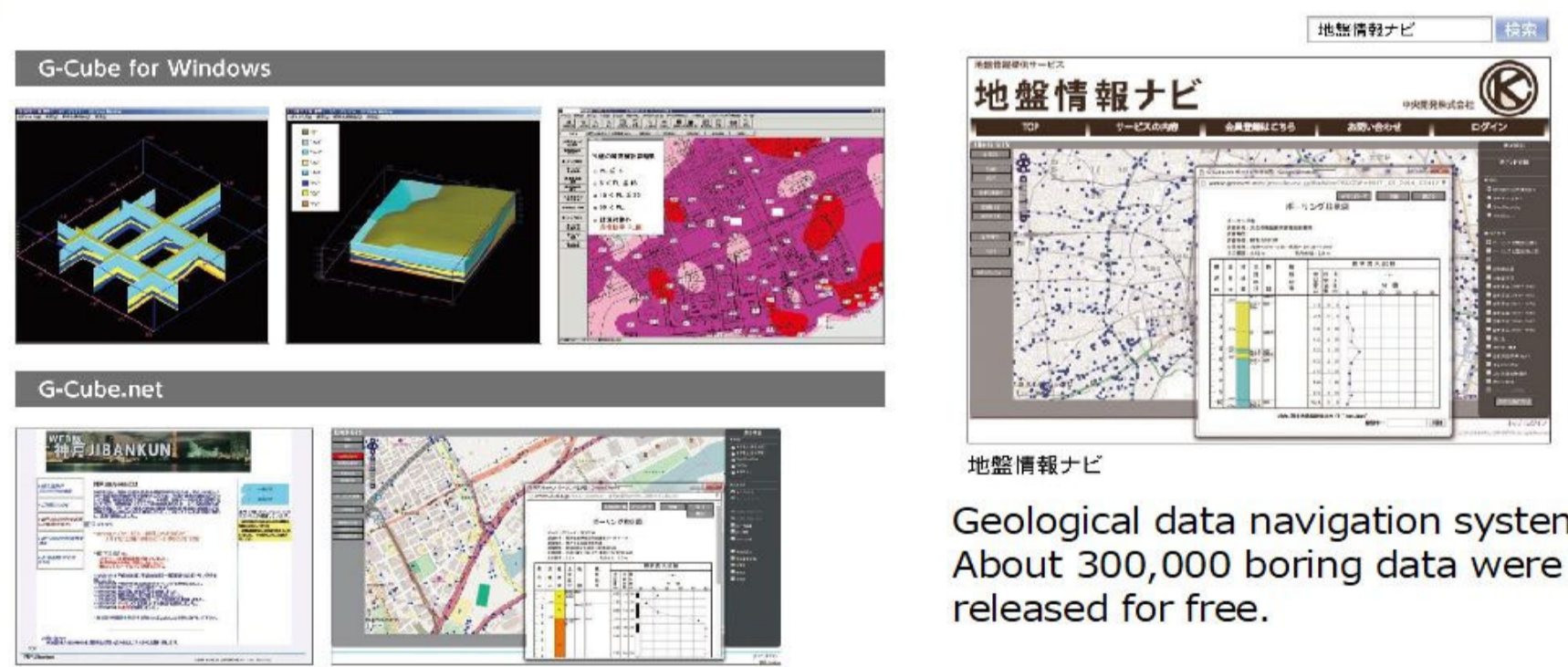
Soil test laboratory

⑪

Our primary services

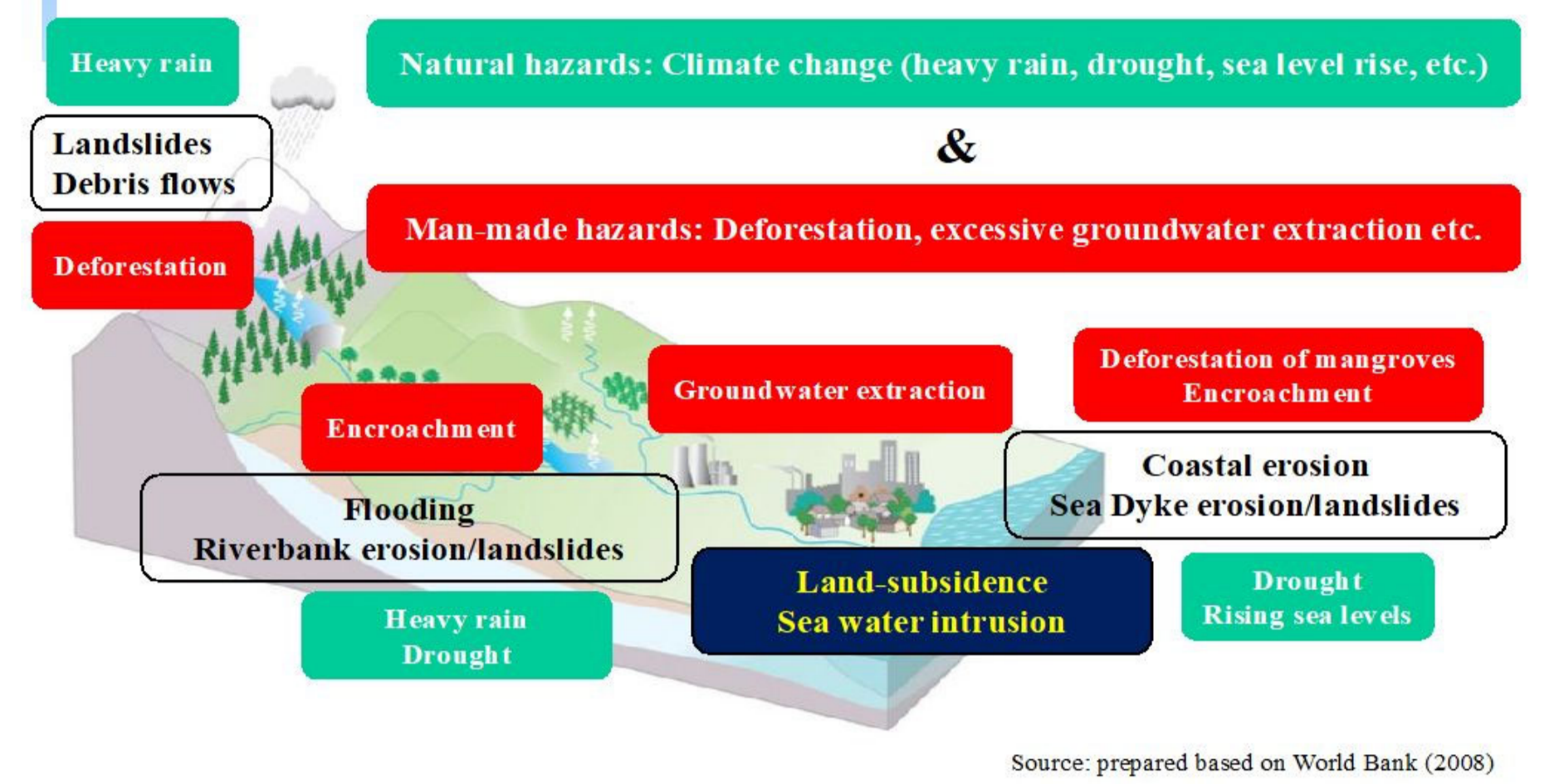
Geotechnical Information/Analysis

- Software development, Integrated Geotechnical Information Management System (G-Cube), Geo-Navi
- Geotechnical and groundwater analysis (anti-seismic modeling, groundwater analysis, earthquake damage prediction)



③

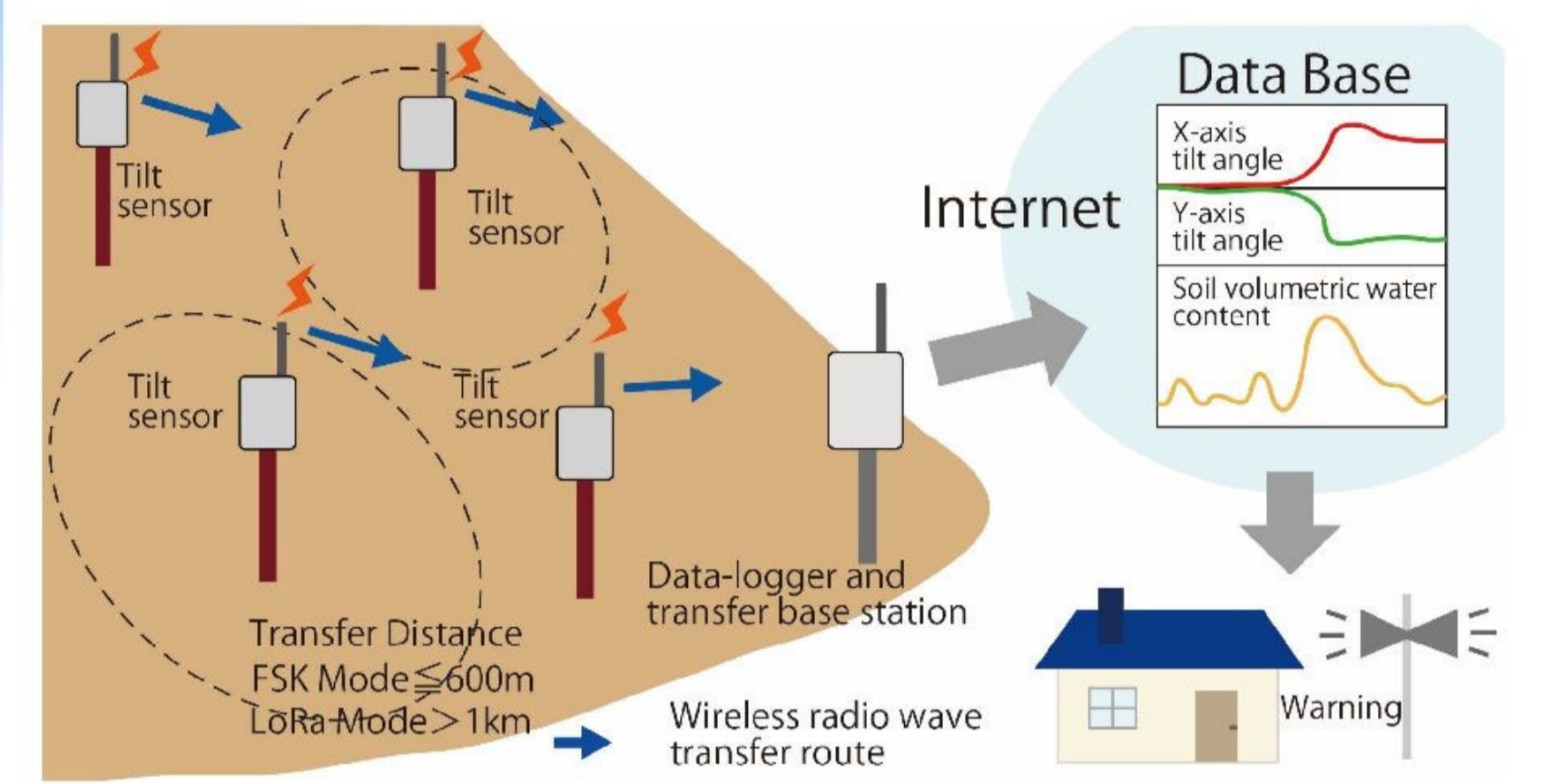
Natural Disaster at River Basin



Source: prepared based on World Bank (2008)

⑥

Slope failure monitoring: Tilt sensor array



⑨

Our primary services

Consulting

- Civil engineering, construction, agricultural development, resource and energy development
- Consulting on local planning, environmental improvement, etc.
- Local disaster prevention planning, crisis management
- Consulting on community participation
- Engineering and construction management

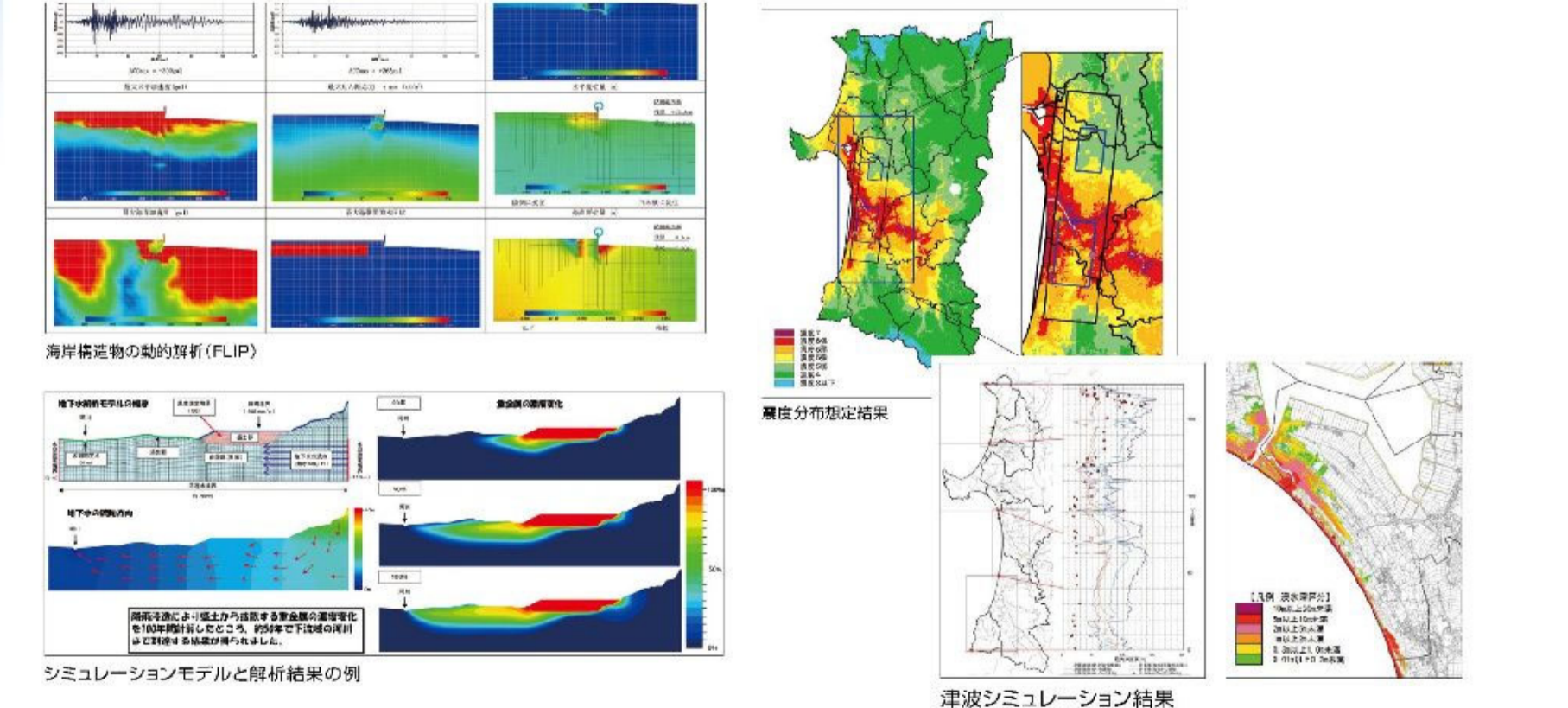


⑫

Our primary services

Geotechnical Information/Analysis

- Software development, Integrated Geotechnical Information Management System (G-Cube), Geo-Navi
- Geotechnical and groundwater analysis (earthquake resistant modeling, groundwater analysis, earthquake damage prediction)



⑭

International Internship 2023

Program

- 10h~10h30: Introduction
- 10h30~12h: Lectures
 - ✓ Purpose of Geotechnical Survey and Social Contribution
 - ✓ Risk Assessment of Slopes
 - ✓ Examples of Slope Hazards

- 12h~13h : Lunchtime
- 13h~14h : Tour of soil testing laboratory
- 14h~16h : Group discussion Presentation

Topic: "Geological risk management"

⑮

International Internship 2022 in Chuo Kaihatsu (2022/9/2)

