



*Japan Conservation Engineers is a consulting firm that specializes in disaster prevention and mitigation for the conservation of land and the environment.*



**We aim to establish a sustainable country by various technology related to earth, water, and vegetation.**

*Consulting Services*



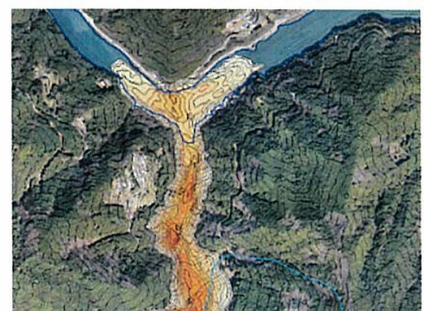
Slope Disaster Management / Forest Conservation and Afforestation / Community Based Disaster Risk Reduction / Disaster Risk Assessment Technology Transfer

*Construction and Supervision*



Construction of Landslide and Slope Disaster Prevention Measures / Countermeasures Against Aging Infrastructure

*Research and Development*



Slope Protection Technology / Afforestation Technology / Geospatial Information Technology / 3D Simulation Technology / Laboratory Testing of Soil and Rocks

