

COMPANY OVERVIEW



SHIMIZU CORPORATION

Business Lines : Construction, Architecture,
Civil Engineering and Property Services

Founding : 1804
Number of employees : 10,688
Number of domestic bases : 47prefecture 85places
Consolidated sales : JPY 1,482.9 billion



Zuishin gate Takada Hachiman shrine
(Conducted in 1849, Edo era)



Tsukiji hotel
(Japan's first Western-style hotel)



Renovation of the Daibutsuden
(Supported with the latest technology)

CONSTRUCTION ACHIEVEMENT IN JAPAN AND OVERSEAS



Yamba Dam
(over 100m tall dam)



Rikuzentakata recovery embankment
(earthquake reconstruction covering 298ha)



Bai Chay bridge
(the longest Single-span cable PC bridge)



Patimban new port access road



Keisei-Sugano under-pass road
(the largest under-pass built with trenchless method in Japan)



Shin-Meishin Hirakata tunnel
(the largest shield tunnel)



Pahang-Selangor water transfer tunnel
(the longest tunnel in Southeast Asia)



Batangas international container terminal



SEP vessel for construction of
offshore wind power plant



Solar power generation PPA on
Josai University campus



Small rocket launching business



Offshore floating city planning

ENGINEERING AND FRONTIER BUSINESS

CONDUCTED AN INTERNSHIP ON SITE

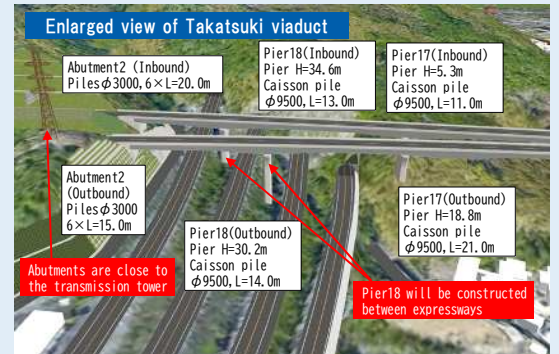
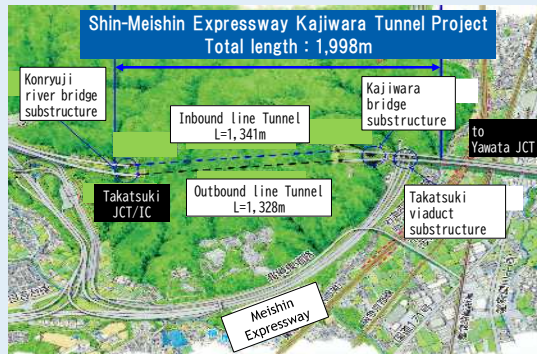
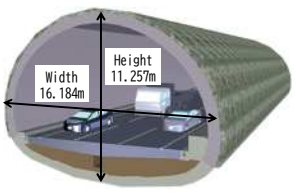
Date : 2nd August (Wed.) 10:00~16:00 (meet up at 10:00 in JR Takatsuki Station)

Location : Site office of Shin-Meishin Kajiwara tunnel project (located on Dou-cho 4, Takatsuki City)

Site Information

Shin-Meishin expressway Kajiwara tunnel project. (consists of 2 tunnels and 10 bridge substructures.)

Tunnel cross section

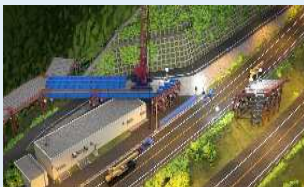


Programs (tentative)

[Lecture (ICT for construction)]

We will explain how ICT is being used in construction for 3D simulation of temporary bridge erection, work procedure review by VR, Tunnel CIM and so on. (Applicants can experience VR in this lecture.)

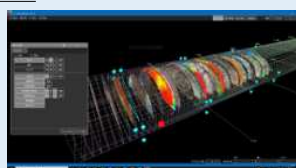
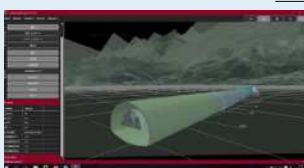
3D simulation



Virtual Reality(VR)



Tunnel CIM



[Site Visiting]

Ongoing Temporary bridge construction and tunnel excavation works.
To Visit the site, observe and feel the construction work.

Temporary bridge construction



Tunnel excavation



For more information, please visit the site's homepage (written in Japanese).